



Tech-Rider



Technical requirements and equipment instructions

This Technical Rider serves the specific technical requirements of a residency/work-in-progress presentation and is primarily designed for a black box/theatre (for legibility reasons).

As the concept of Raum.Zeit also envisages performances in quiet public, site-specific and multidisciplinary art spaces, will be adapted in consultation with the respective venues.

DURATION 30 min, 50min, continuous performance lasting several hours; (full length and durational performance still in creation)

TEAM ON TOUR Tobias Piero Dohm, by arrangement as a duo with Fabian Laute as live musician + lighting designer

STAGE Black box/ theatre, preferably a fine, dark, smooth surface, e.g. dance floor; dark background; 2-3 suspension points (simple hooks are sufficient, load capacity 50 kg)

STAGE DIMENSIONS 8m x 8 m x 5m clear height (minimum); no distance between stage and audience necessary (size of 8m x 6m x 5 under circumstances possible, too)

STAGE SET-UP Stage at ground level with front row; as much of the action takes place on the floor, it is advantageous for visibility if the audience is seated slightly higher, so each additional row of seats should be higher than the one in front, frontal or semi-circular possible

TECHNOLOGY A minimum of basic sound and lighting equipment suitable for the size of the stage; one of the technicians should be present at the beginning of the residency

LIGHT The creation provides for the development of a specific lighting design concept, so that the tech rider will be supplemented with a lighting plan in due course

SOUND Sound system suitable for the size of the room and including cables; in the presence of the musician, a storage table for a modular synthesiser is required, generally: no GEMA, as music from own production

NUMBER OF SPECTATORS depending on the venue

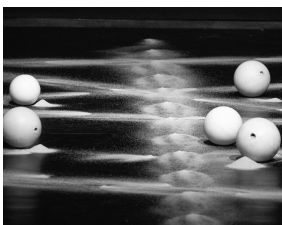
SET-UP approx. 3h

RECOMMENDED AGE no limit, all living beings

TRANSPORT / ACCOMMODATION Accommodation if the return journey on the same day is not possible due to the distance or the planning of several performance days; car park for car (Sprinter, licence plate: K-YZ-9798); Possibility to unload equipment directly at the venue

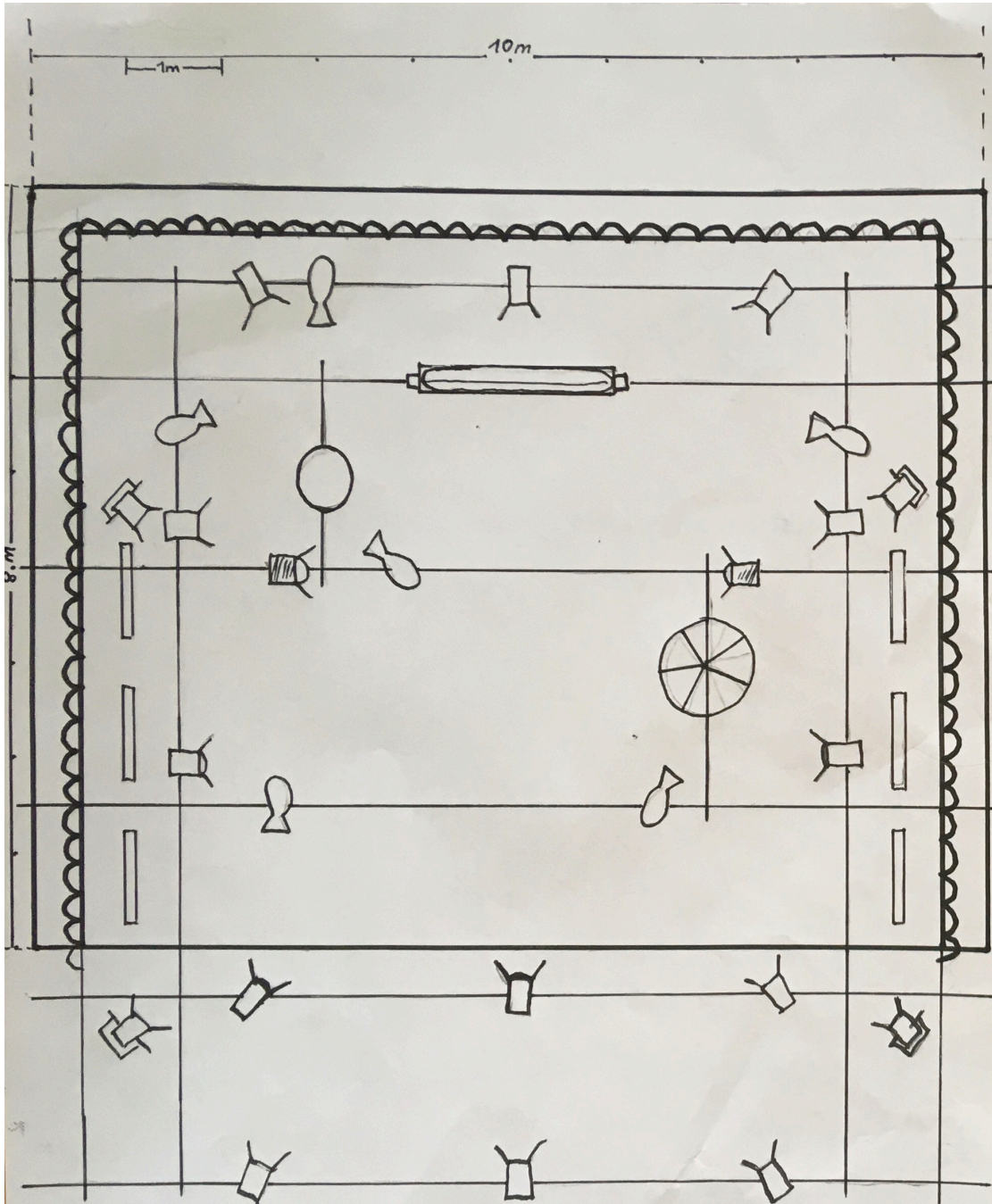
FOOD Vegetarian/vegan, fruit preferred, please refrain from using unnecessary plastic

The performance can take place several times a day with a break of 1-2 hours between the performances or, in the further course of the creation, a continuous performance lasting several hours (suitable for museums, galleries, churches, car parks, etc.) will be developed. Latecomers are also welcome after the start of the performance



Please note that approx. 50 kg of sand is used in the production, which is reused thanks to a self-developed filter system. Great care is taken to protect the space; the spread of the sand is strictly controlled within the working space.

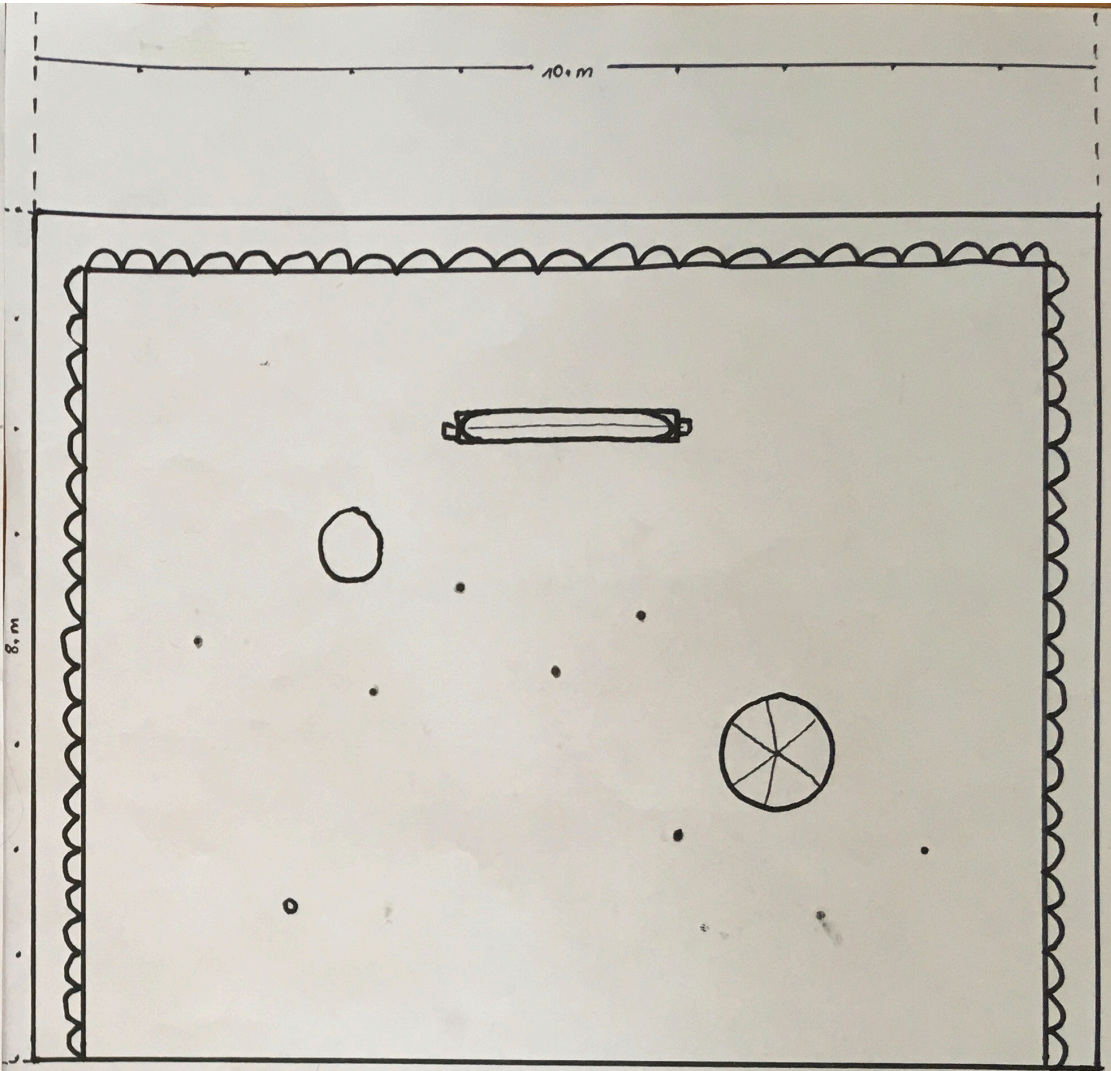




LIGHTS

- x 6 → profiler 25-50 1KW
- x 13 → fresnel 1KW w/ burndoor
- x 6 → sunstrip 700W w/ floorstand
- x 2 → PC 1KW burndoor
- x 4 → fresnel 1KW floorstand burndoor

RAUM.ZEIT



OBJECTS

- moon Ø 60 cm, ~30 kg
 - turning wheel Ø 100 cm, ~3 kg
 - sand curtain Ø 200 cm x 20 cm, ~25 kg
 - pendulum ball Ø 13 cm
 - planets/balls Ø 7.5-10 cm
- } simple string & hook

RAUM.ZEIT